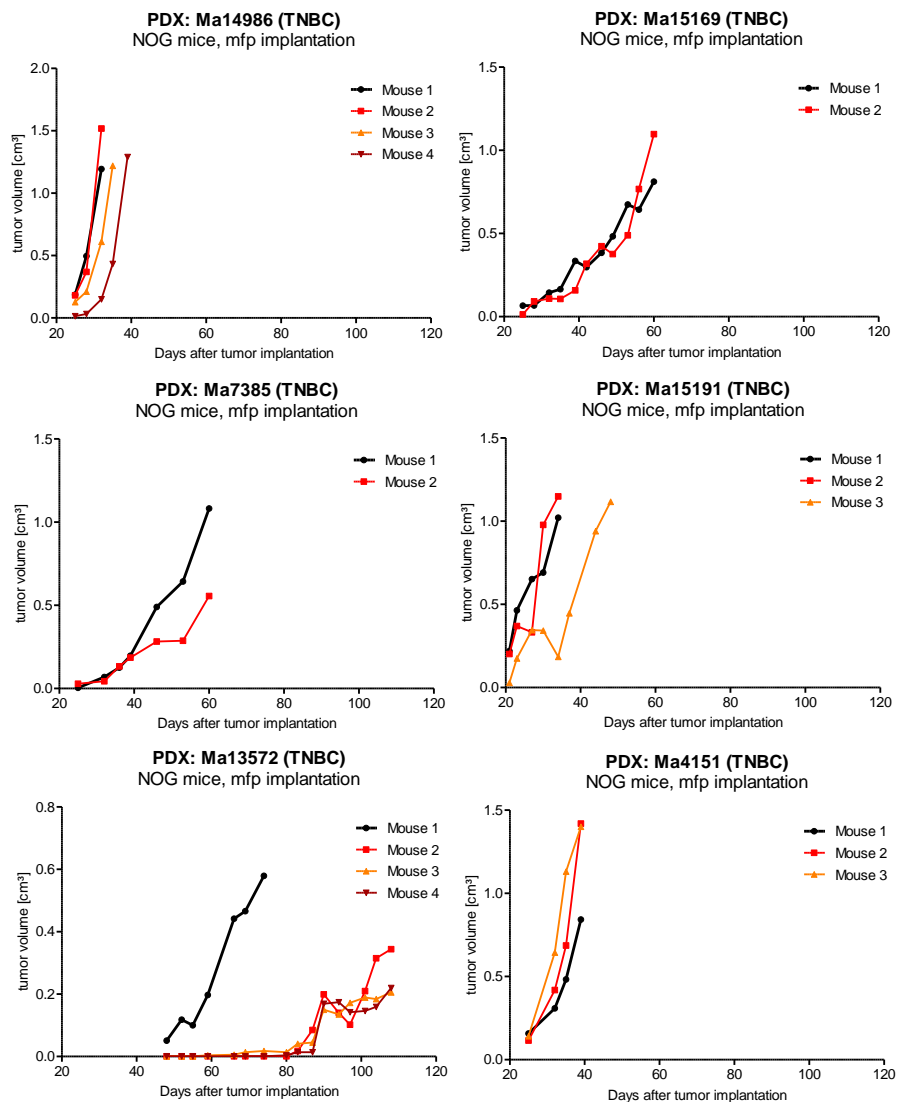


Orthotopic *in vivo* growth of TNBC PDX models



Implantation of tissue fragments or single cell suspensions from seven different PDX into the mammary fat pad (mfp) of female NOG mice

Evaluation of metastasis after orthotopic growth

PDX	macroscopic metastasis	microscopic metastasis (PCR)
	<i>mammary fat pad</i>	<i>mammary fat pad</i>
Ma4151	none	liver (+) lung (+) bone marrow (+)
Ma4296	none	liver (+) lung (++)
Ma7385	none	liver (++) lung (+)
Ma13572	none	lung (+)
Ma14986	none	bone marrow (+)
Ma15169	none	liver (+) lung (+++)
Ma15191	none	liver (+) lung (+) spleen (+)

Microscopic metastasis in certain organs was determined by a human-specific Real-Time qPCR using an optimized primer-probe-assay targeting the alpha-satellite region of the human chromosome 17a locus

PCR score: + low / ++ medium / +++ high expression